

COMUNE DI CECINA



OGGETTO: Realizzazione di n. 9 Alloggi di ERP  
Area Edificabile situata tra Via Aurelia Nord e il  
Fosso del Poggio d'Oro - Cecina

**PROGETTO ESECUTIVO  
DELLE STRUTTURE IN C.A.**

comando	data
progetto	Dic. 2012
SCALA, carpenteria e armature	
1:50 1:25	

Progettista, Ing. Michelangelo Raddi  
Ufficio Tecnico Casa Livorno e Provincia S.p.A.

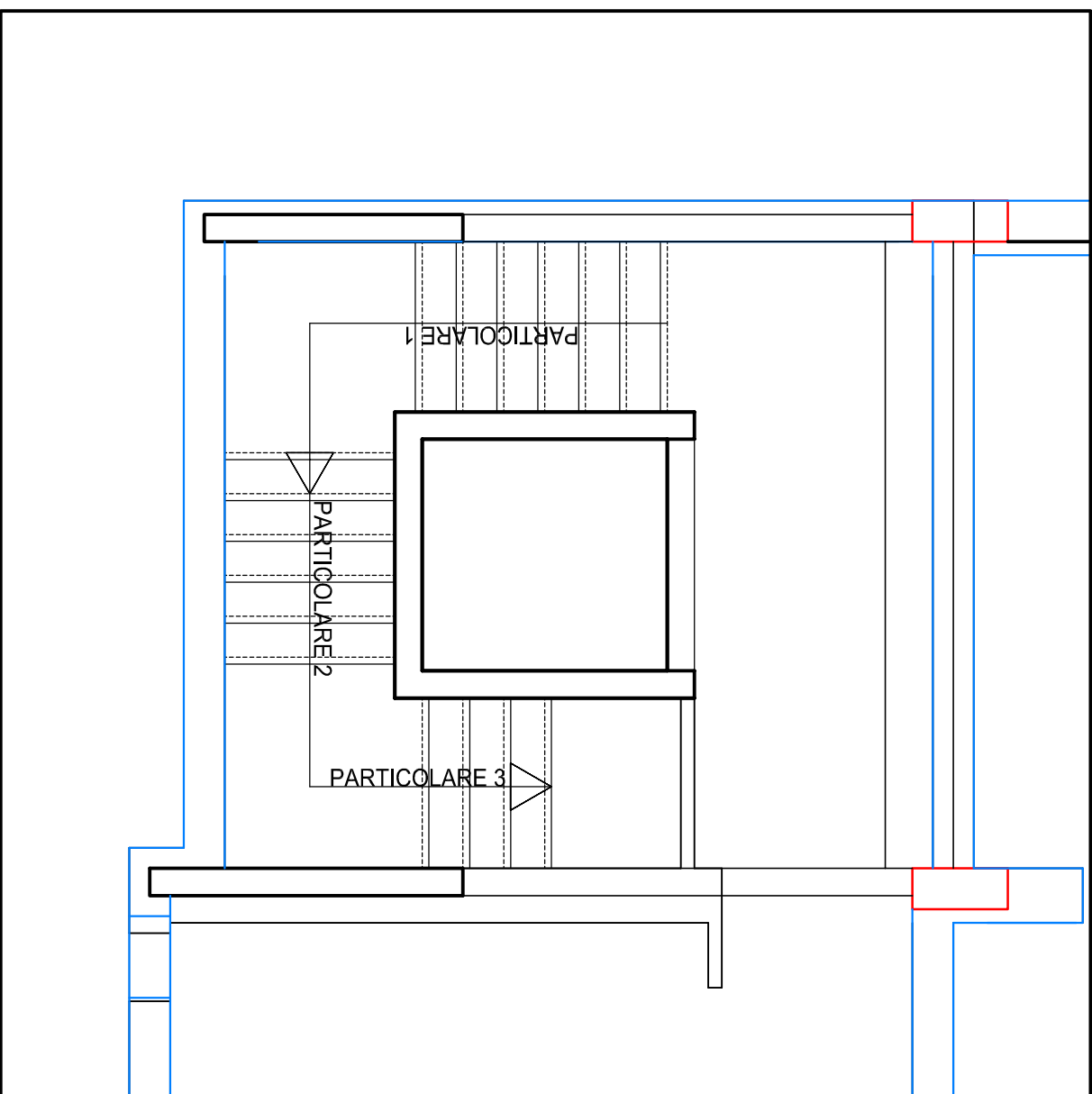


timbro e firma

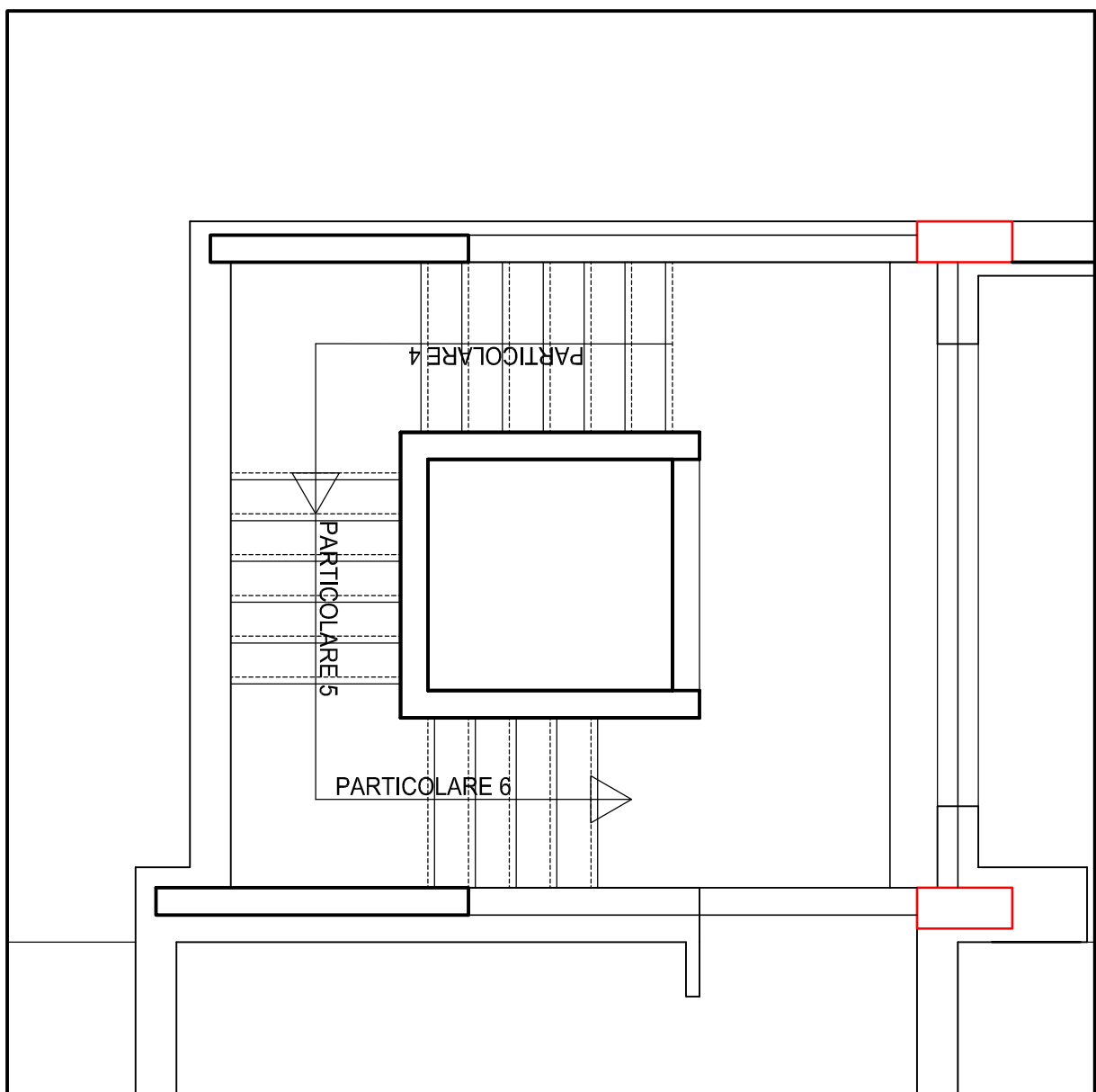
MATERIALI IMPIEGATI:  
cls per magrone e sottocollazione: Rck= 150 kg/cm<sup>2</sup>  
cls per strutture di fondazione tipo C25/30: Rck= 300 kg/cm<sup>2</sup>  
acciaio per barre di armatura: Rsk= 500 kg/cm<sup>2</sup>  
acciaio in barre ad aderenza migliorata R 400C

N.B. il coprifreno delle strutture a vista è pari a cm 3

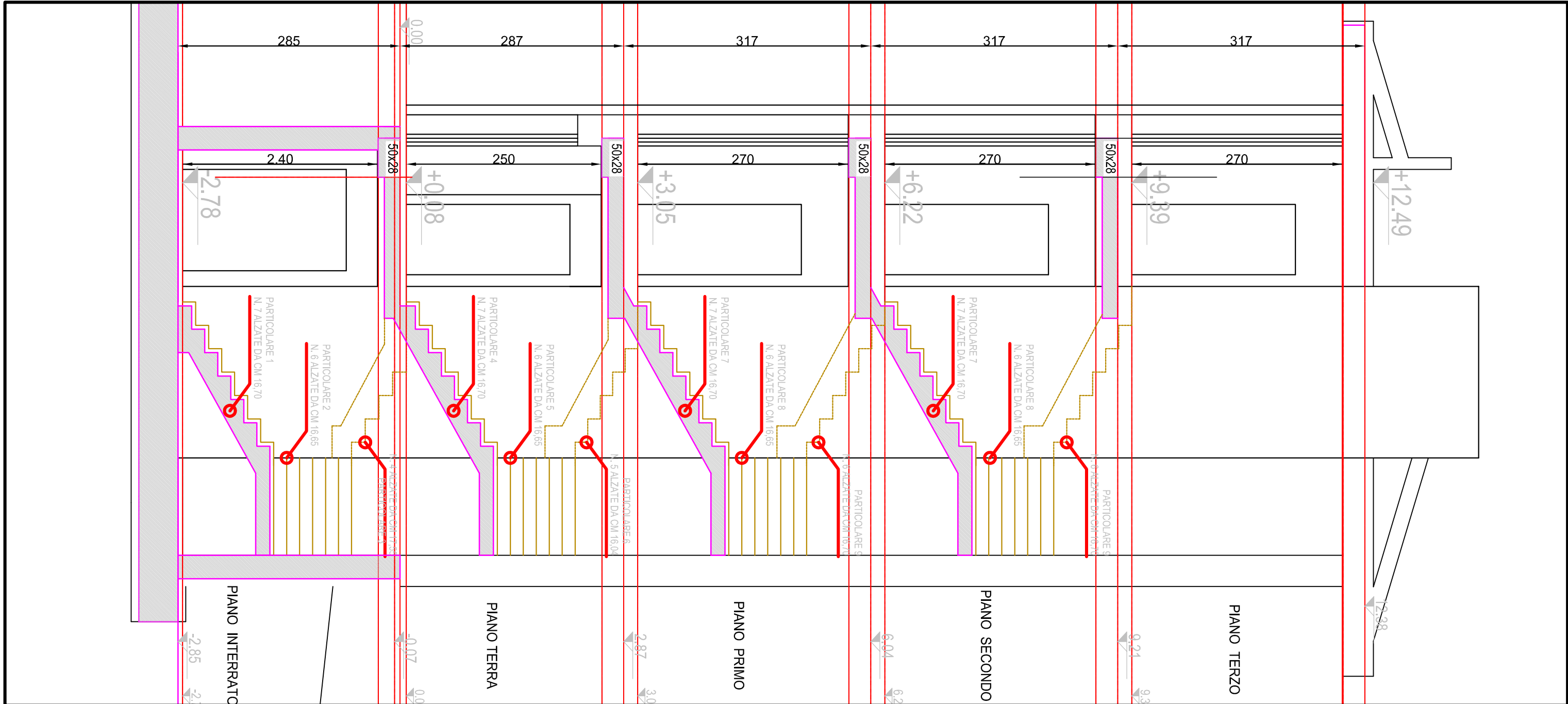
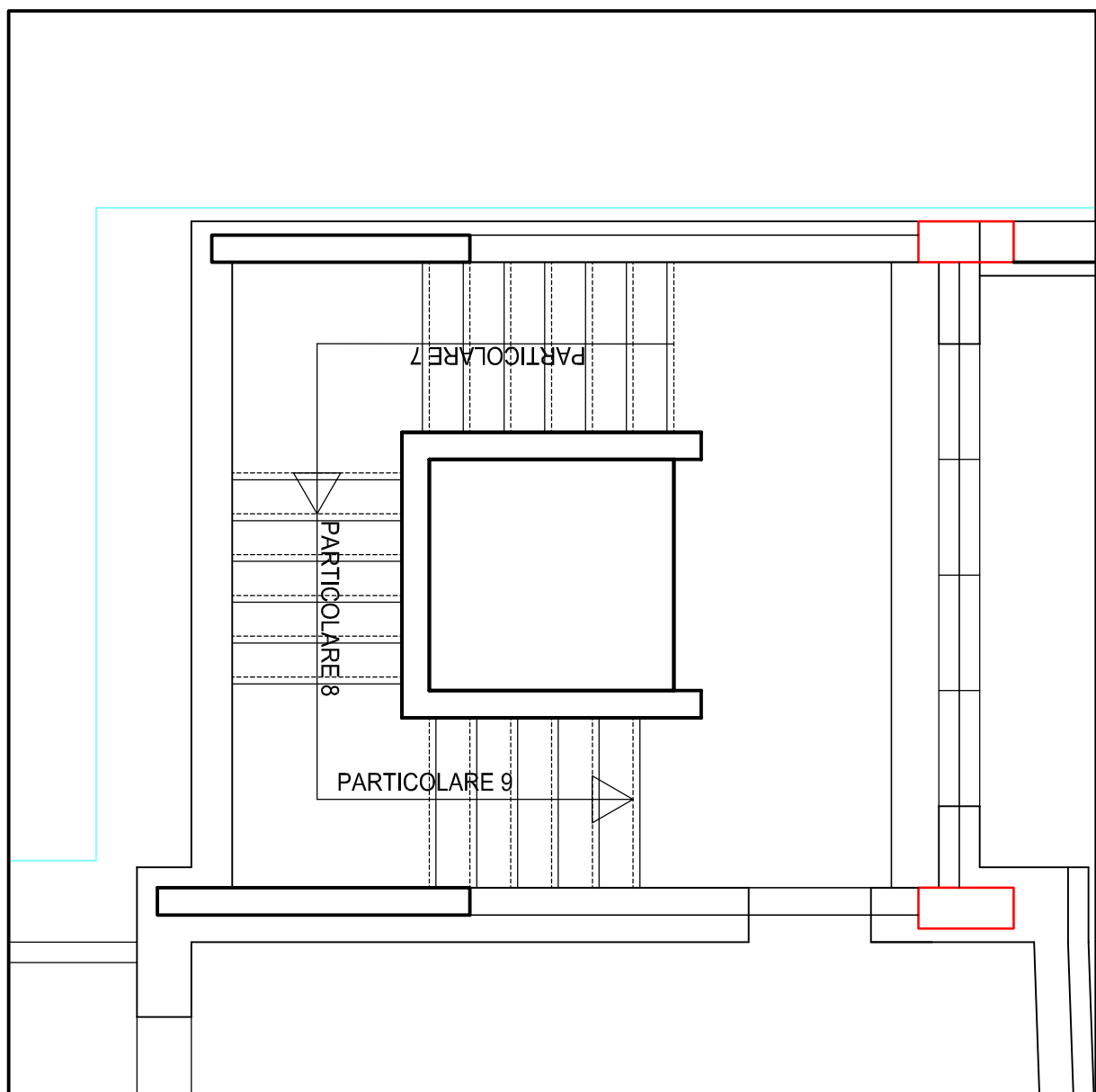
RAMPA PIANO INTERRATO-PIANO TERRA



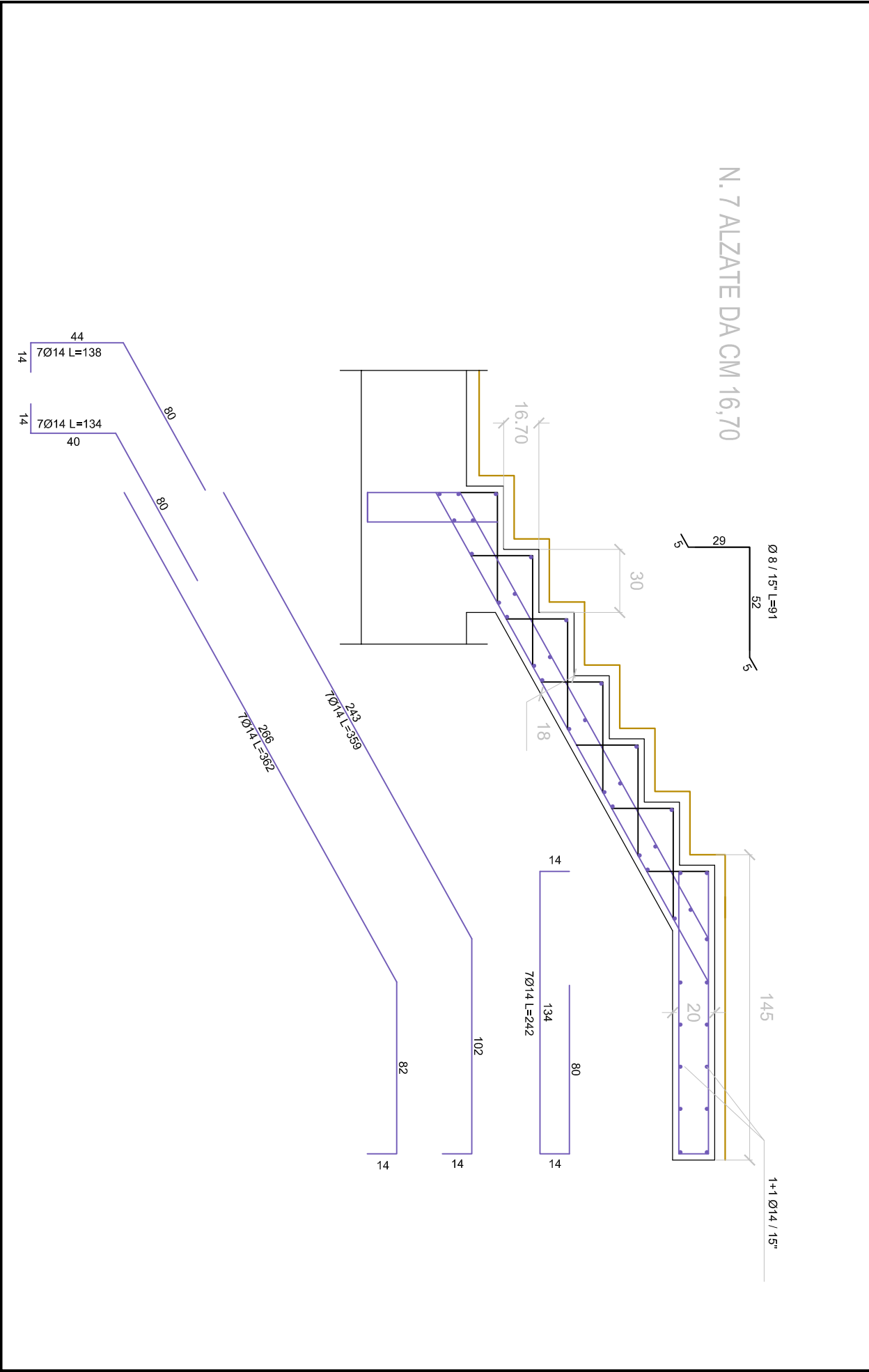
RAMPA PIANO TERRA-PIANO PRIMO



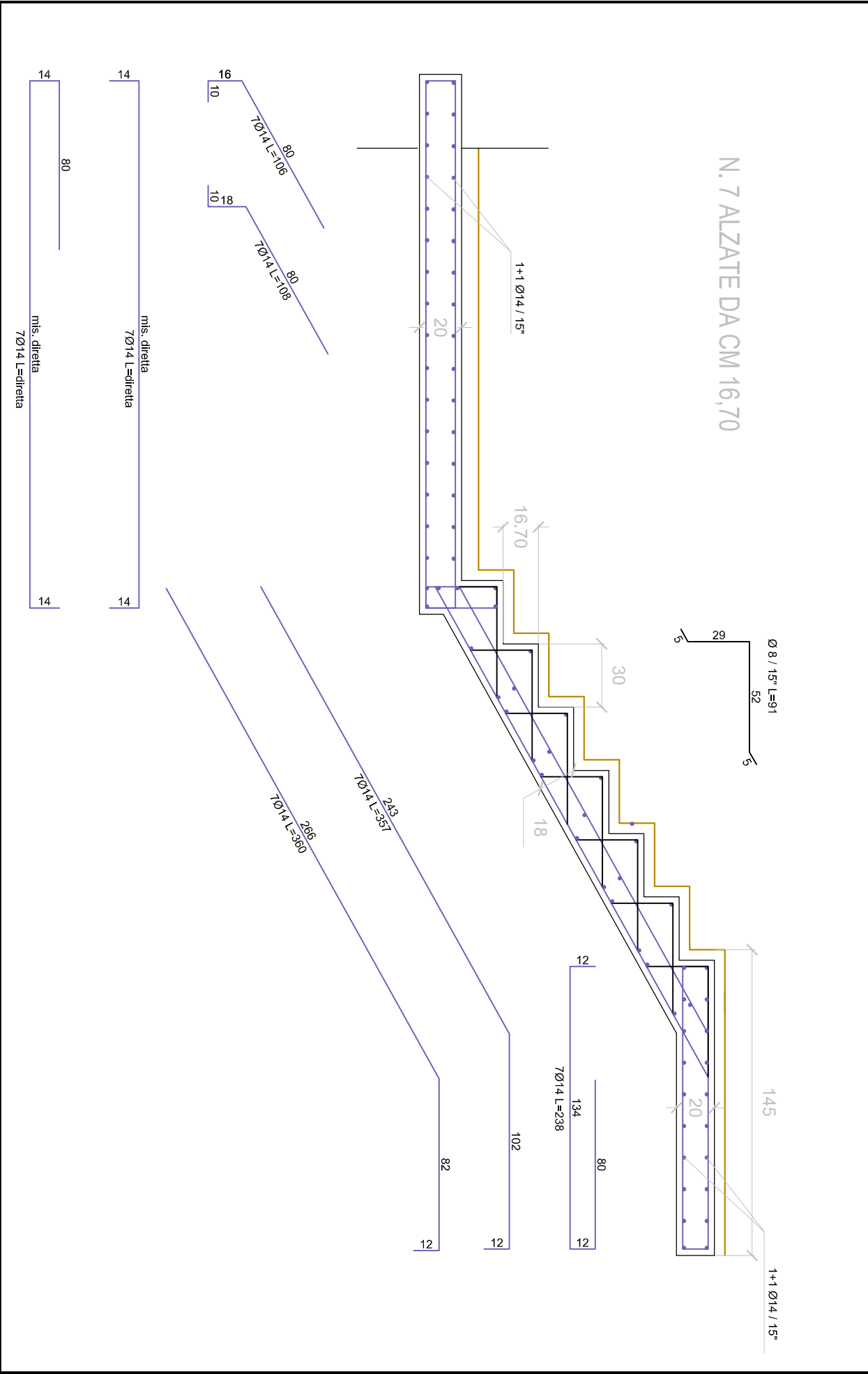
RAMPA PIANO PRIMO-PIANO SECONDO  
RAMPA PIANO SECONDO-PIANO TERZO



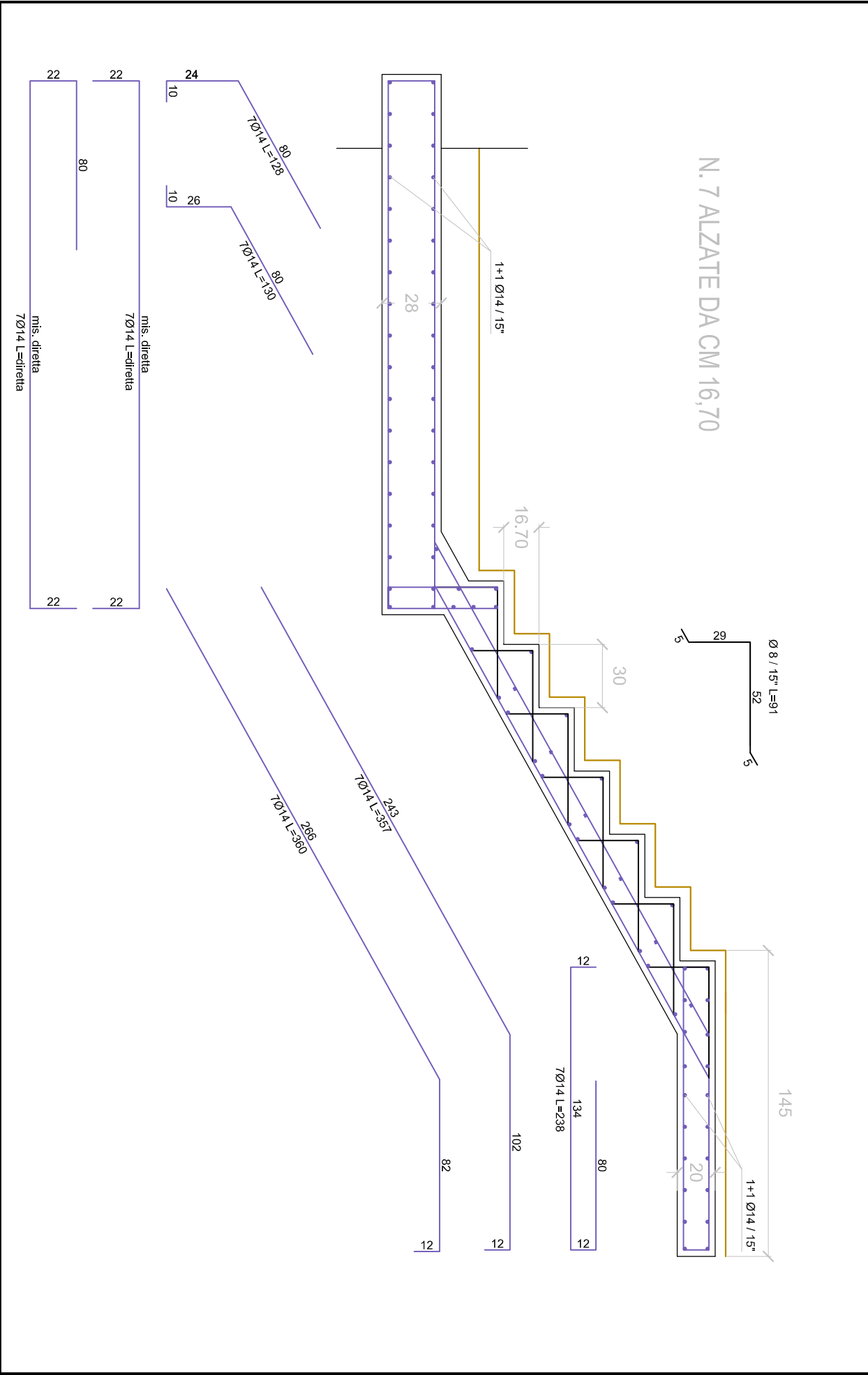
PARTICOLARE 1



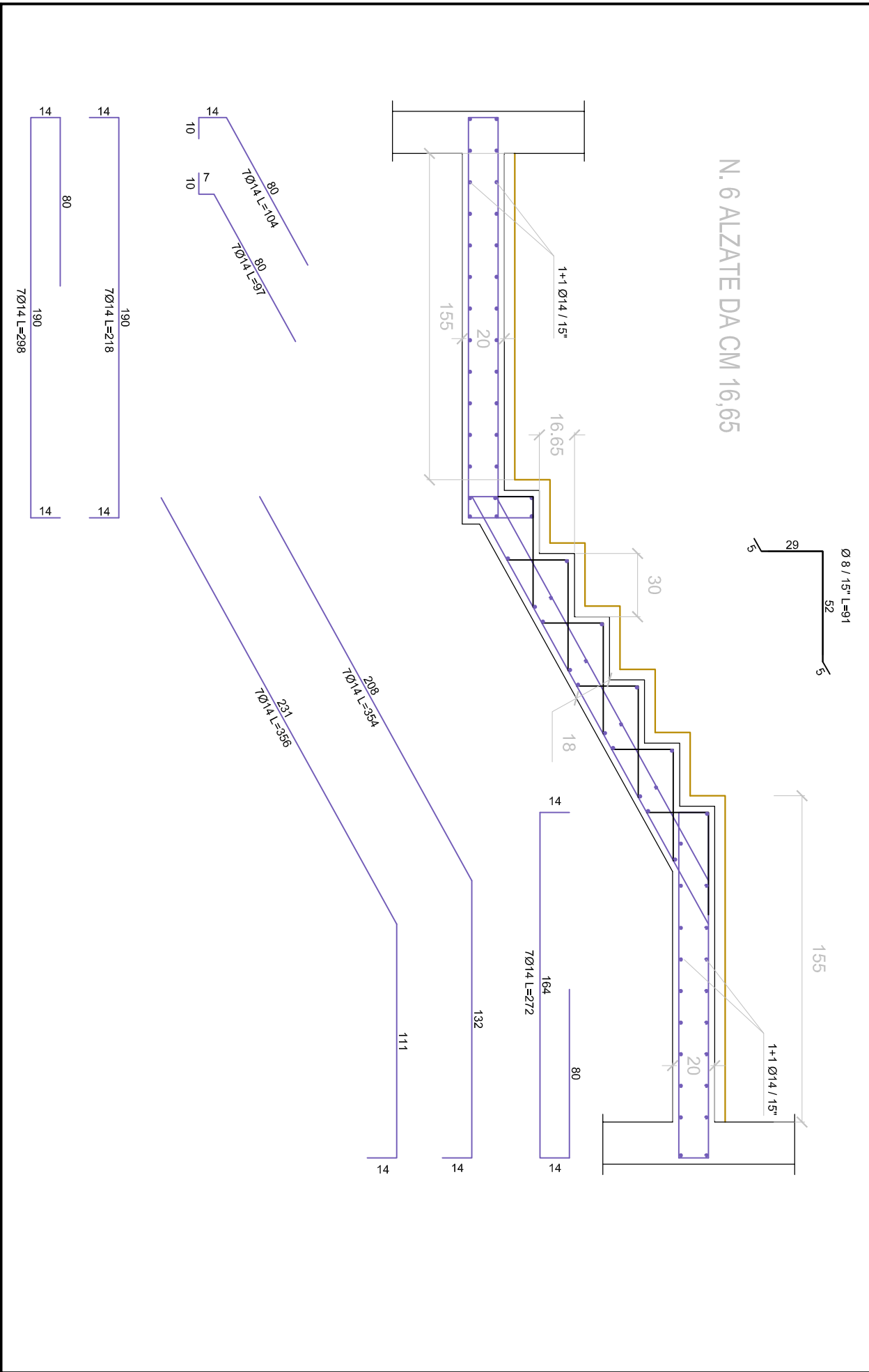
PARTICOLARE 4



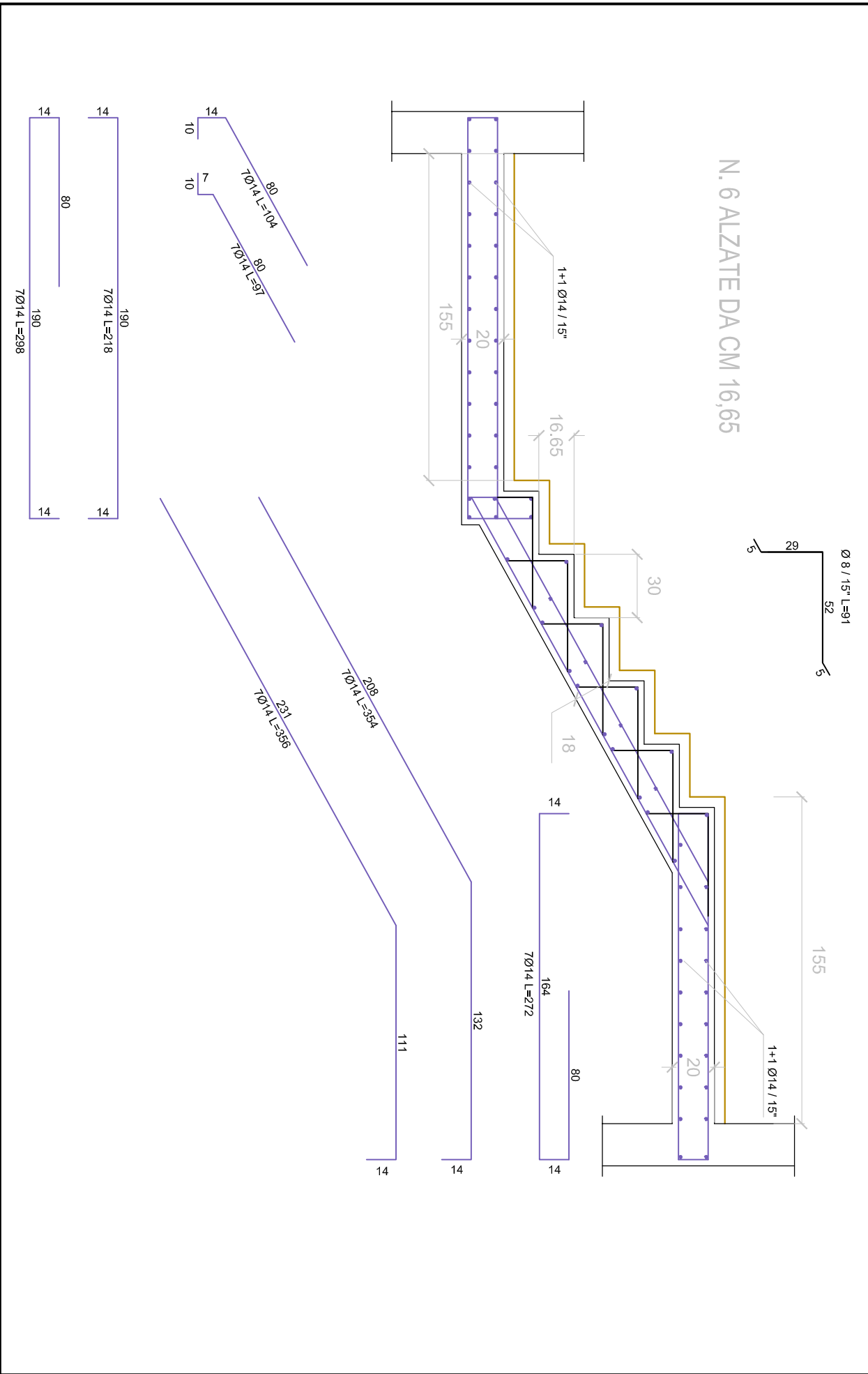
PARTICOLARE 7



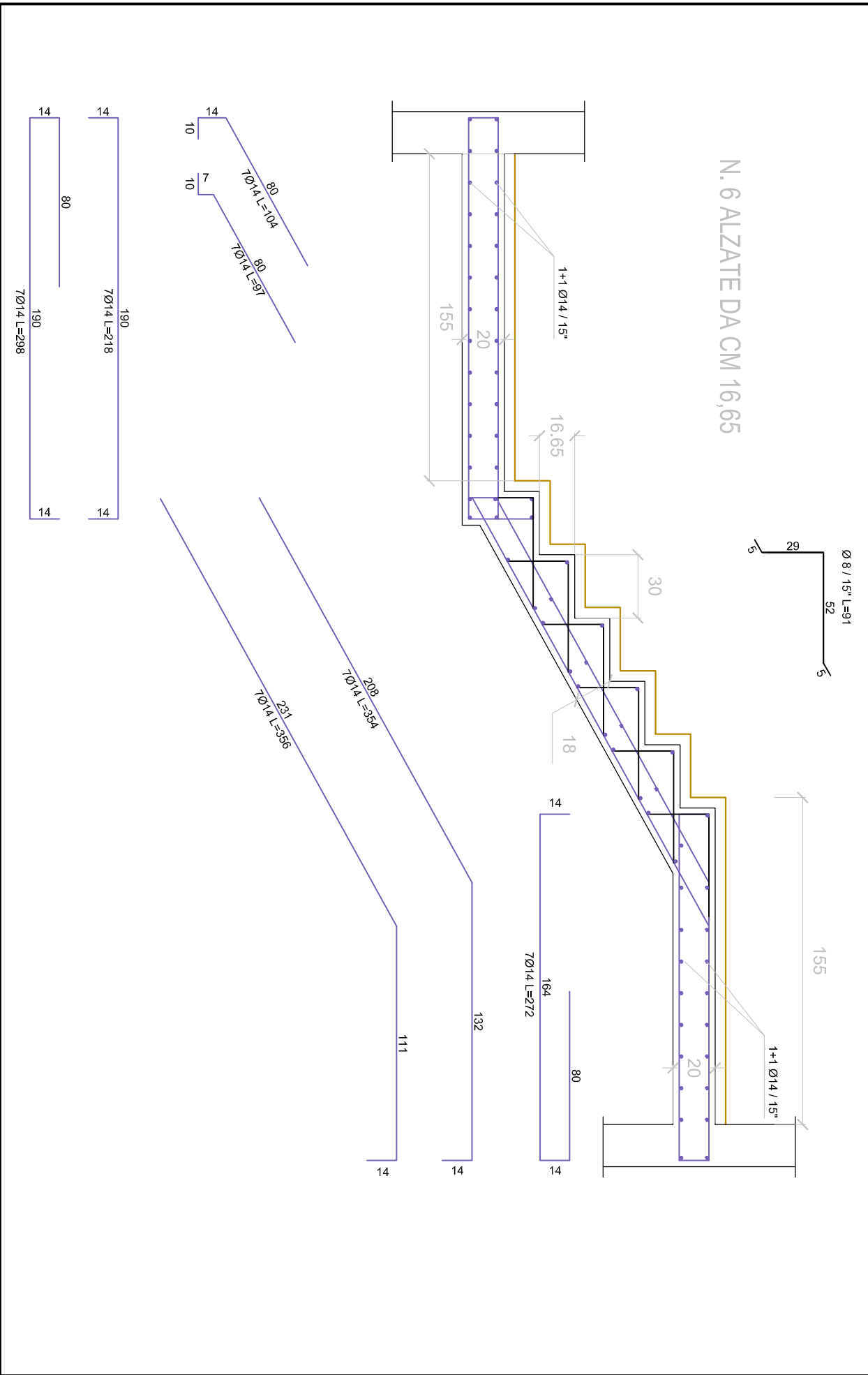
PARTICOLARE 2



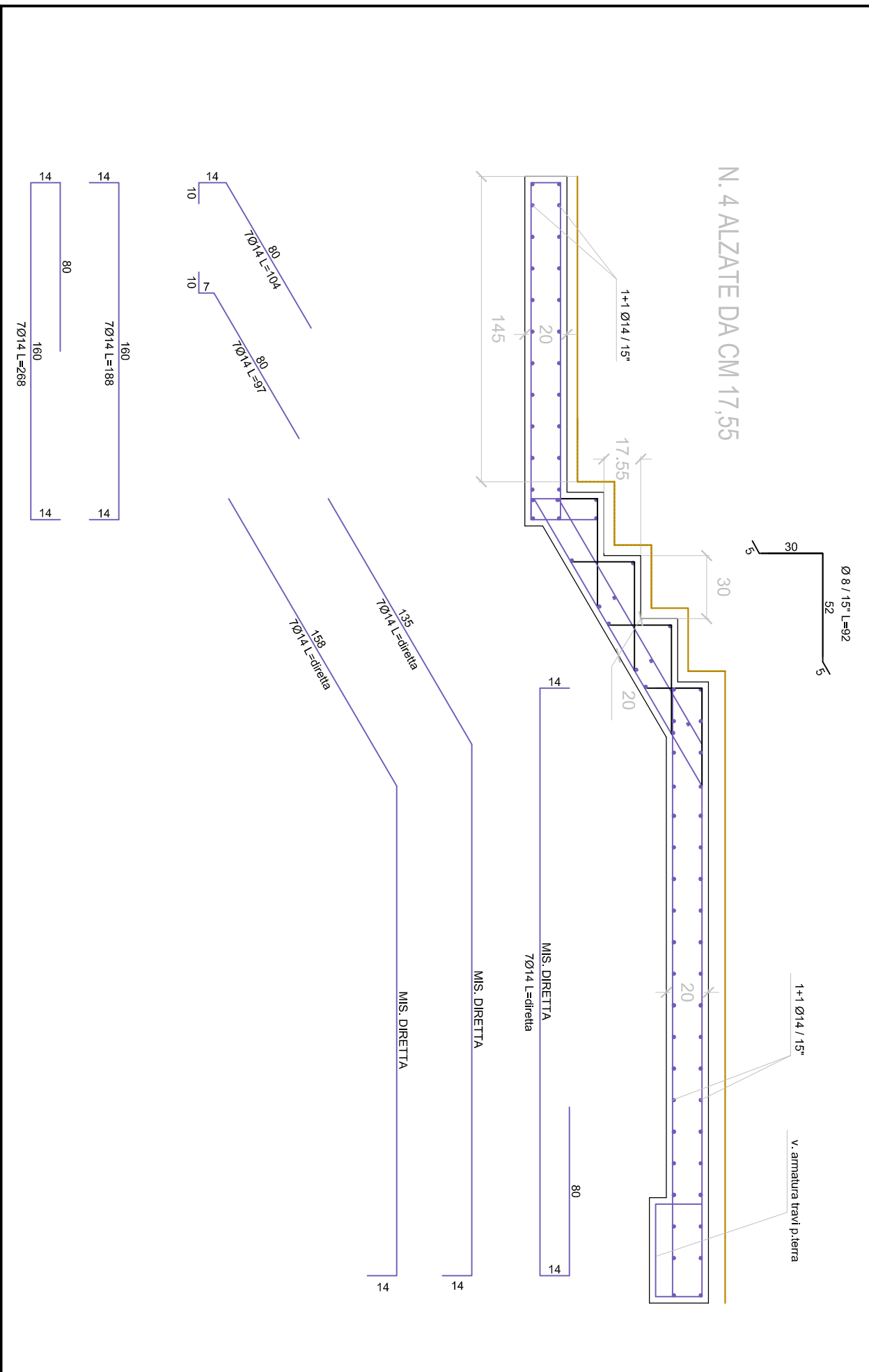
PARTICOLARE 5



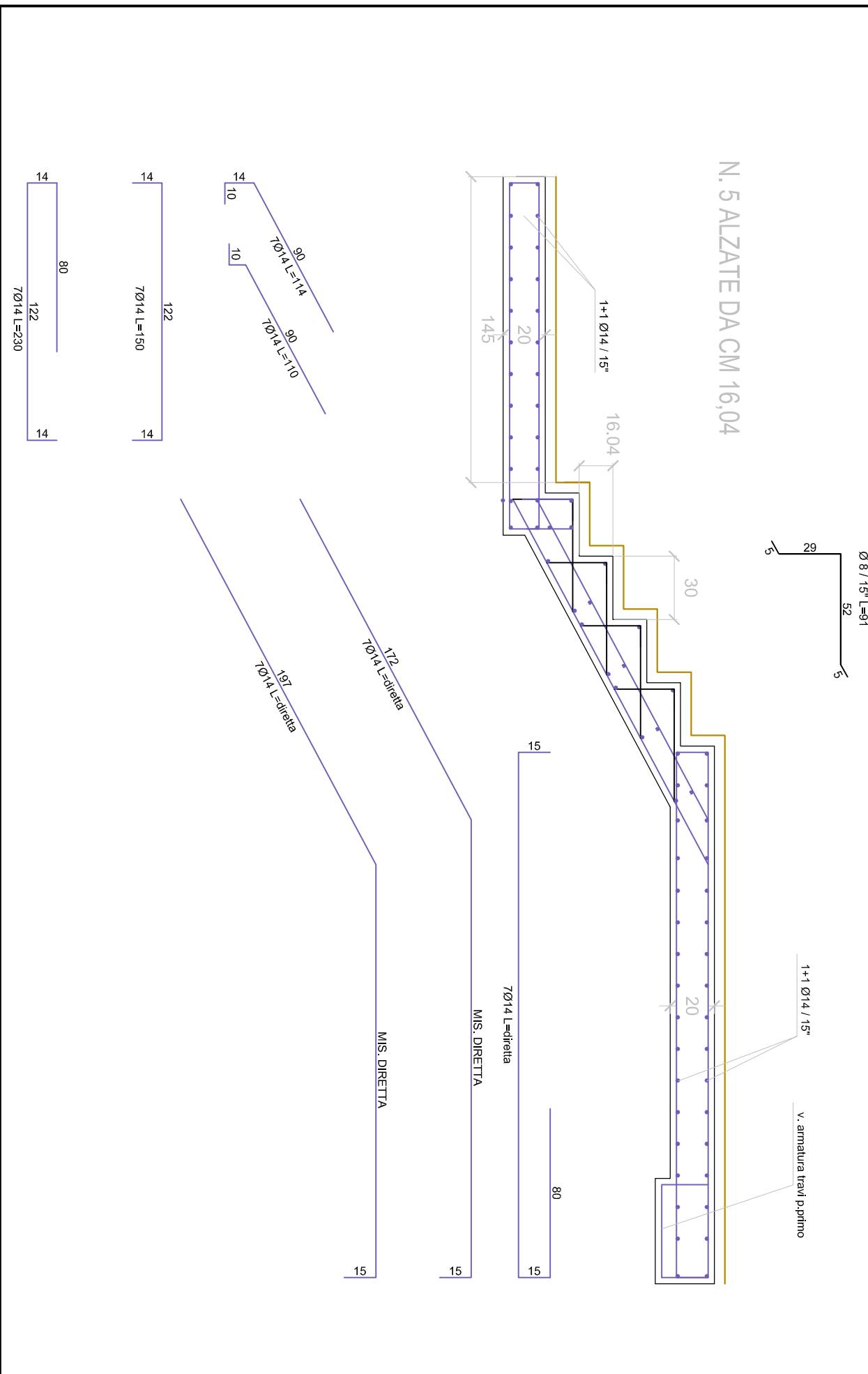
PARTICOLARE 8



PARTICOLARE 3



PARTICOLARE 6



PARTICOLARE 9

